

特別例会上位プログラム棋譜

HARUKA

黒：彩 対 白：HARUKA(勝ち)
 黒：思考錯碁 対 白：HARUKA(勝ち)
 黒：HARUKA(勝ち) 対 白：あんどろ君囲碁
 黒：Martha 対 白：HARUKA(勝ち)
 黒：HARUKA(勝ち) 対 白：カレンのささやき
 黒：イメージ 対 白：HARUKA(勝ち)
 黒：GnuGo 対 白：HARUKA(勝ち)
 黒：HARUKA(勝ち) 対 白：勝也

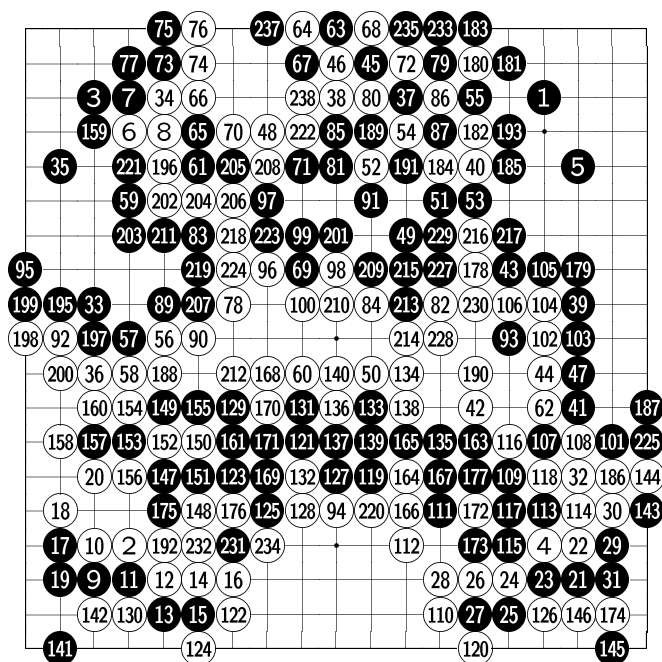
彩

黒：イメージ 対 白：彩(勝ち)
 黒：彩(勝ち) 対 白：GnuGo

黒：勝也(勝ち) 対 白：彩
 黒：彩(勝ち) 対 白：カレンのささやき
 黒：思考錯碁 対 白：彩(勝ち)
 黒：彩(勝ち) 対 あんどろ君囲碁
 黒：Martha 対 白：彩(勝ち)

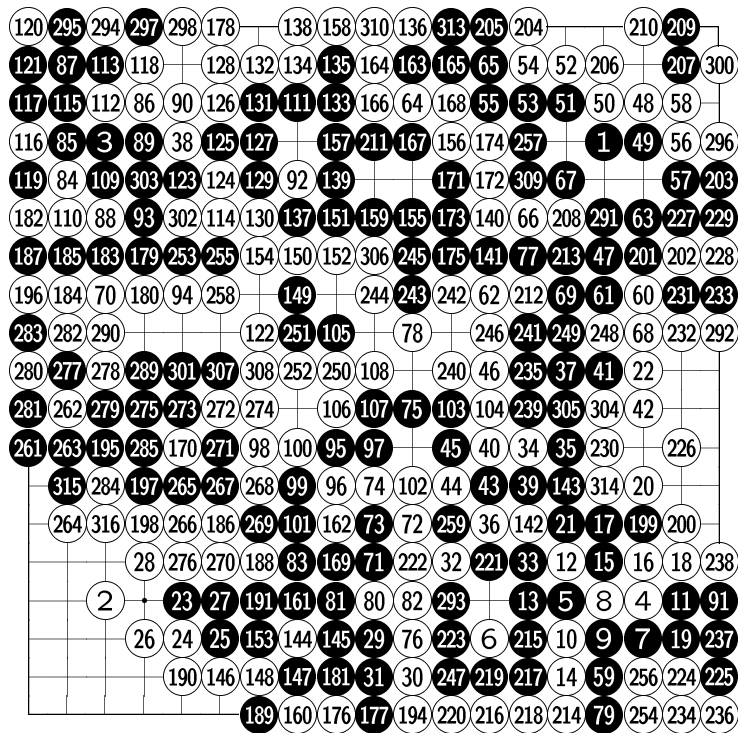
GnuGo

黒：Martha 対 白：GnuGo(勝ち)
 黒：GnuGo(勝ち) 対 白：カレンのささやき
 黒：GnuGo(勝ち) 対 白：イメージ
 黒：GnuGo(勝ち) 対 白：あんどろ君囲碁
 黒：勝也 対 白：GnuGo(勝ち)
 黒：思考錯碁 対 白：GnuGo(勝ち)



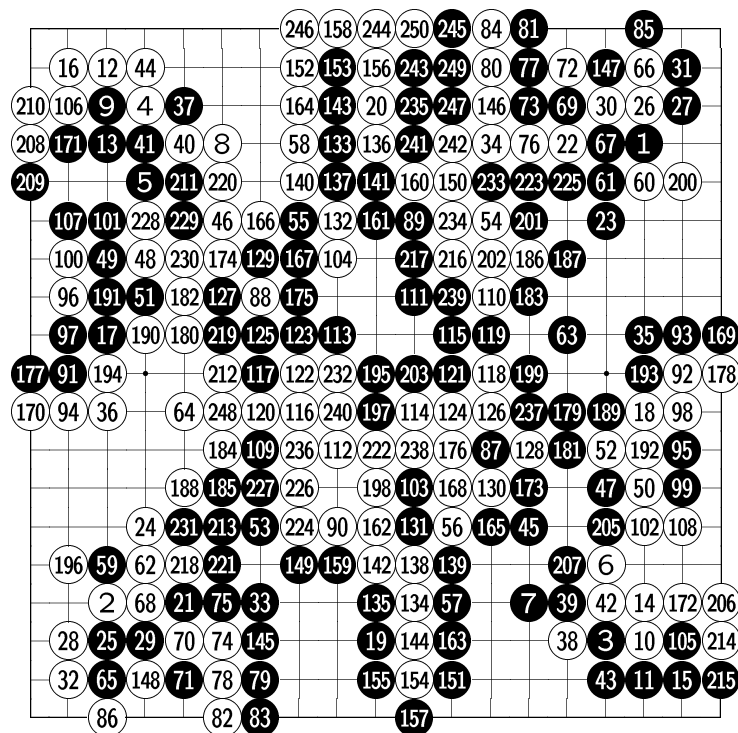
- ⑧⑧ at ③⑦,
- ①⑥② at ①⑤③,
- ①⑨④ at ⑧⑦,
- ②②⑥ at ①⑦⑦,
- ②③⑨ at ⑥③,
- ②④① at ④⑤

黒：彩 対 白：HARUKA(勝ち)



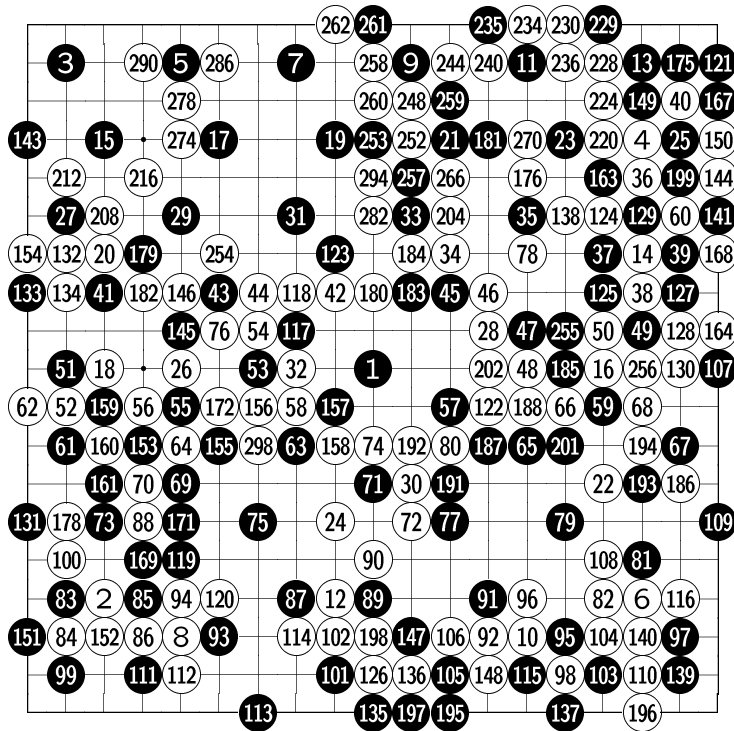
- 192 at 160,
- 193 at 176,
- 260 at 36,
- 286 at 280,
- 287 at 262,
- 288 at 283,
- 299 at 294,
- 311 at 142,
- 312 at 259

黒：思考錯碁 対 白：HARUKA(勝ち)



- 204 at 87

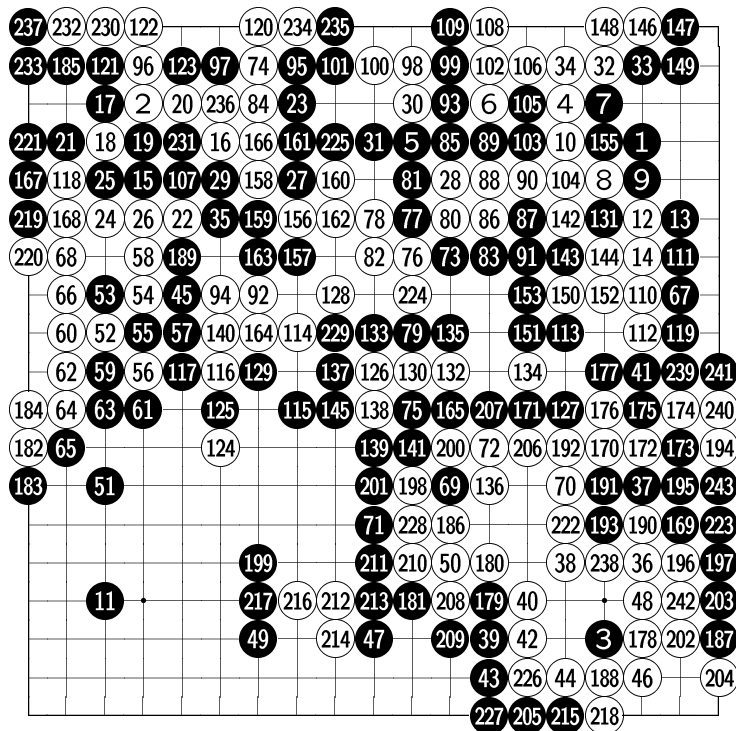
黒：HARUKA(勝ち) 対 白：あんどう君囲碁



- 142 at 14,
- 162, 170 at 64,
- 165, 173, 189 at 153,
- 166 at 159,
- 174 at 70,
- 177 at 88,
- 190 at 55,
- 200, 206, 210, 214, 218, 222,
- 226, 232, 238, 242, 246, 250,
- 264, 268, 272, 276, 280, 284,
- 288, 292, 296, 300 at 40,
- 203, 207, 211, 215, 219, 223,
- 227, 233, 239, 243, 247, 251,
- 267, 271, 275, 279, 283, 287,
- 291, 295, 299 at 25,

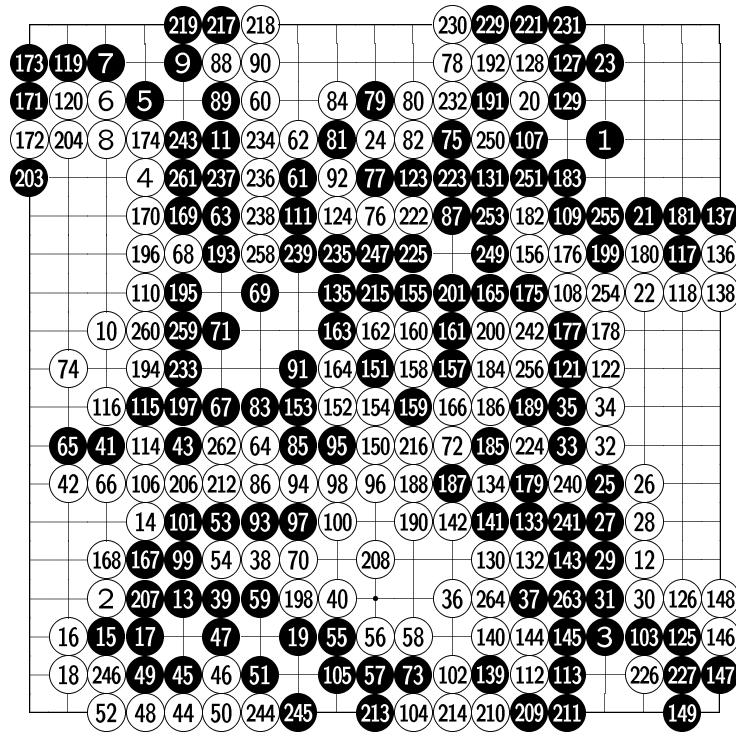
205, 209, 213, 217, 221, 225, 231, 237, 241, 245, 249, 263, 265, 269, 273, 277, 281, 285, 289, 293, 297
at 199

黒 : Martha 対 白 : HARUKA(勝ち)



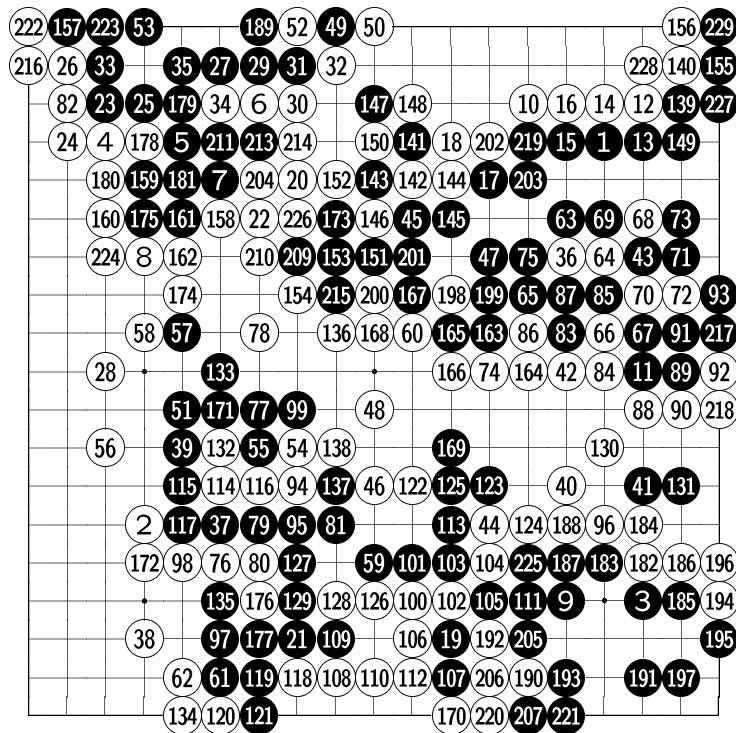
154 at 131

黒 : HARUKA(勝ち) 対 白 : カレンのささやき



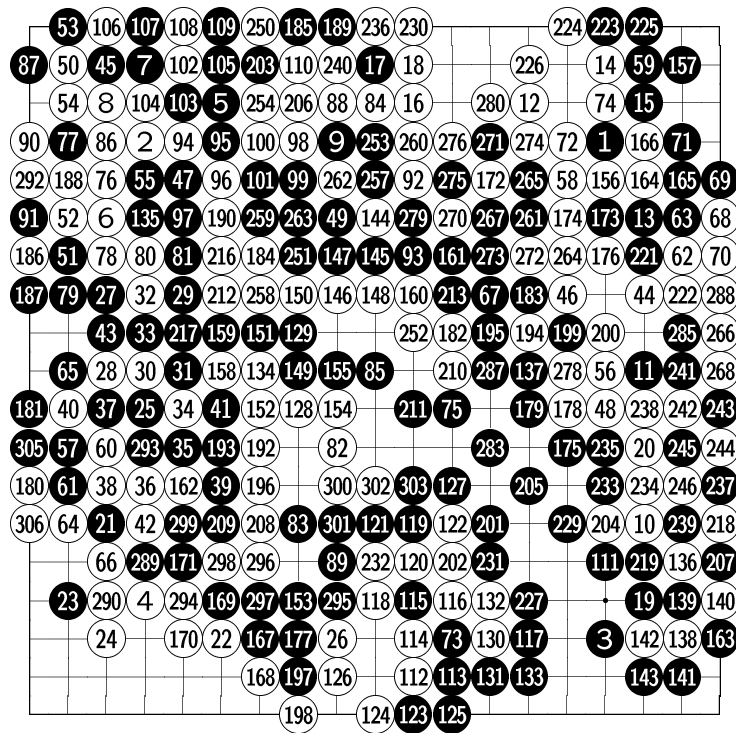
- 202, ○220 at ○134,
- 205 at ●187,
- 228 at ●185,
- 248 at ●81,
- 252 at ●191,
- 257 at ○240

黒：イマージュ 対 白：HARUKA(勝ち)



- 208 at ●49,
- 212 at ●143

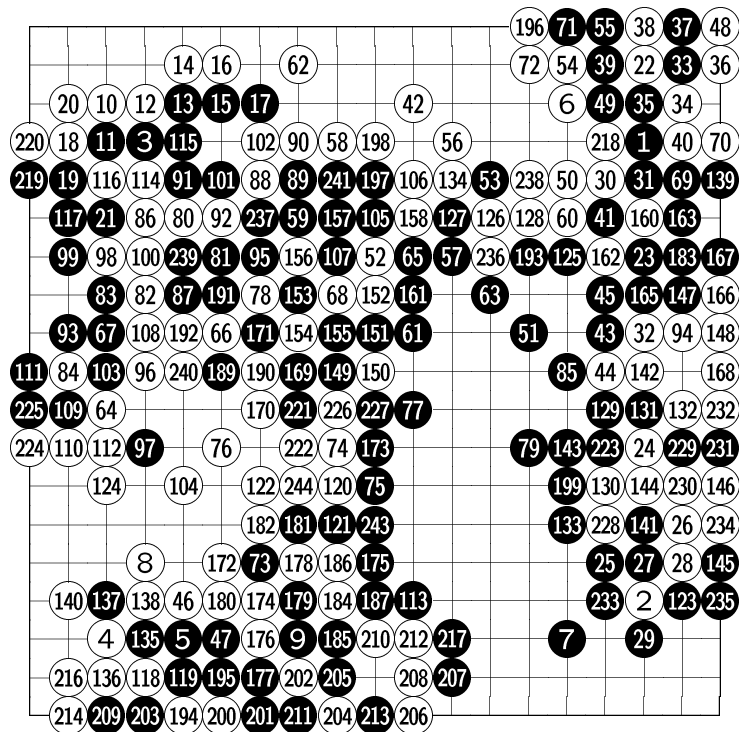
黒：GnuGo 対 白：HARUKA(勝ち)



- 191 at 186,
- 214 at 102,
- 215 at 108,
- 220 at 140,
- 228, 249 at 207,
- 247 at 244,
- 248, 269 at 218,
- 255 at 185,
- 256 at 189,
- 277 at 172,
- 281 at 257,
- 282 at 9,

284 at 194, 286 at 199, 291 at 250, 304 at 21, 307 at 144, 308 at 253

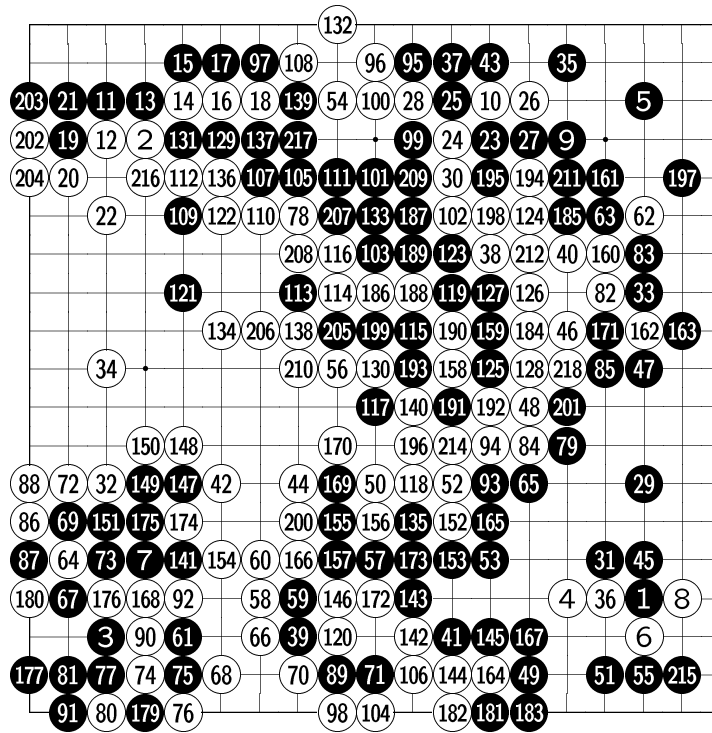
黒：HARUKA(勝ち) 対 白：勝也



- 159 at 153,
- 164 at 41,
- 188 at 73,
- 215 at 194

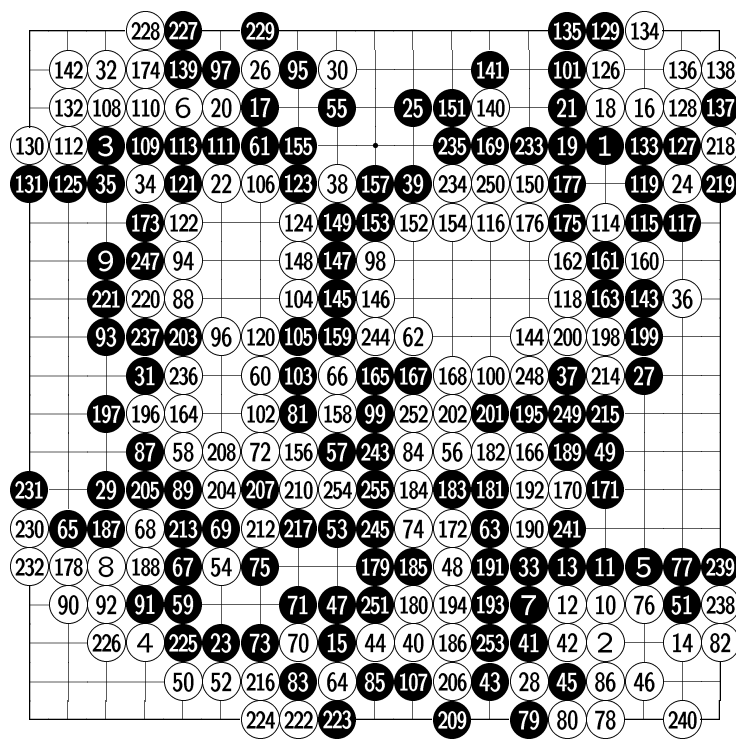
242: Pass

黒：イメージ 対 白：彩(勝ち)



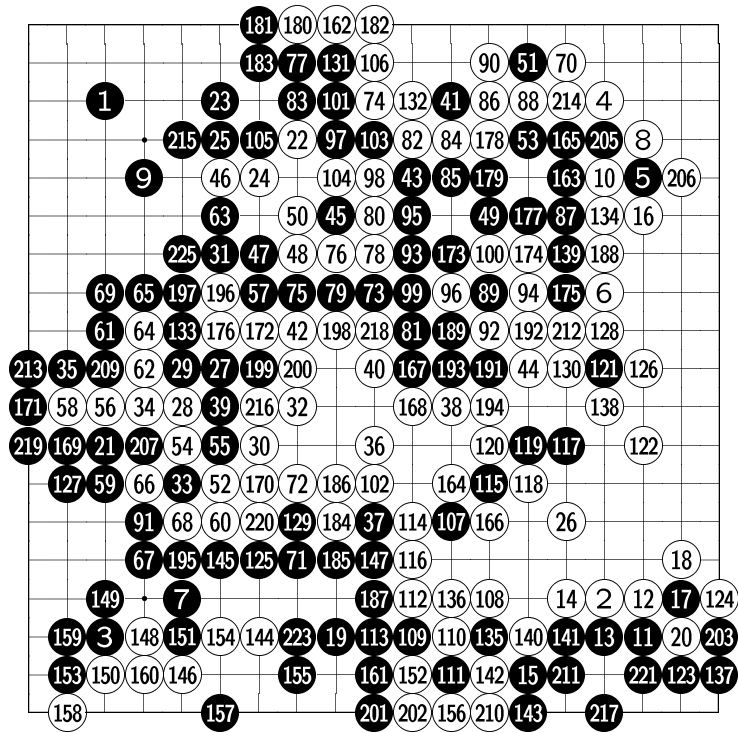
178 at 64,
213 at 158

黒：彩 (勝ち) 对白：GnuGo



211 at 28,
242 at 137,
246 at 207

黒：勝也 (勝ち) 对白：彩



190 at 89,

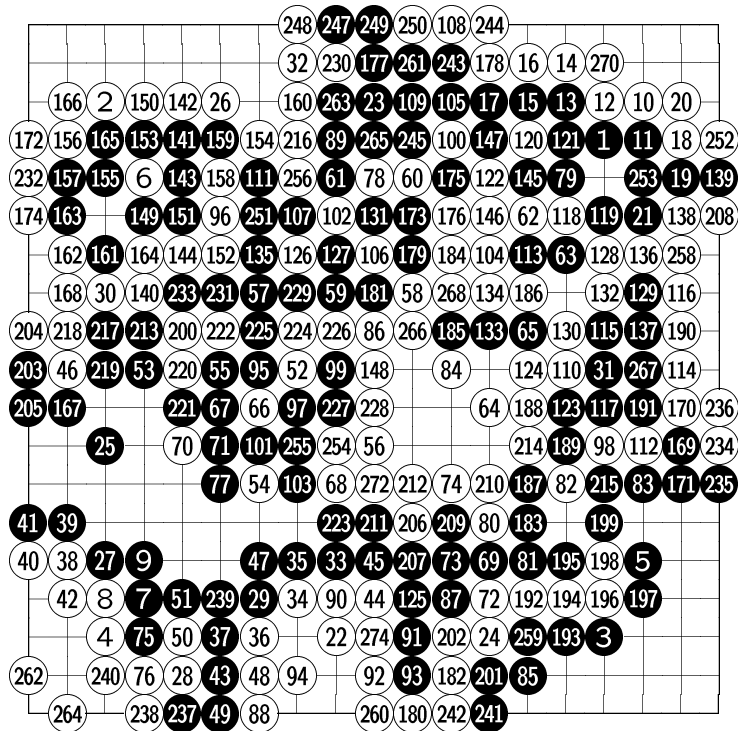
204 at 17,

208 at 33

222: Pass

224: Pass

黒：彩 (勝ち) 対 白：カレンのささやき



246 at 175,

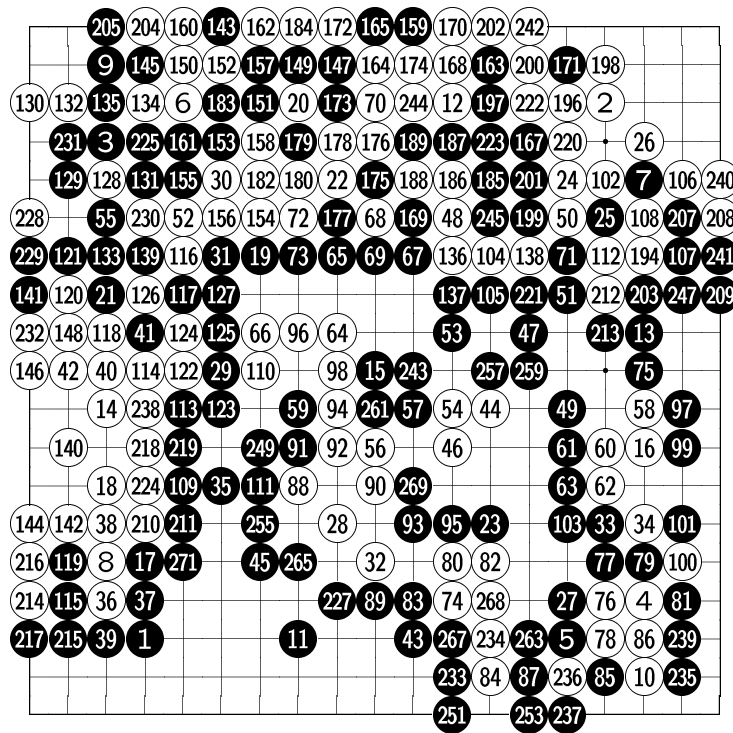
257 at 102

269: Pass

271: Pass

273: Pass

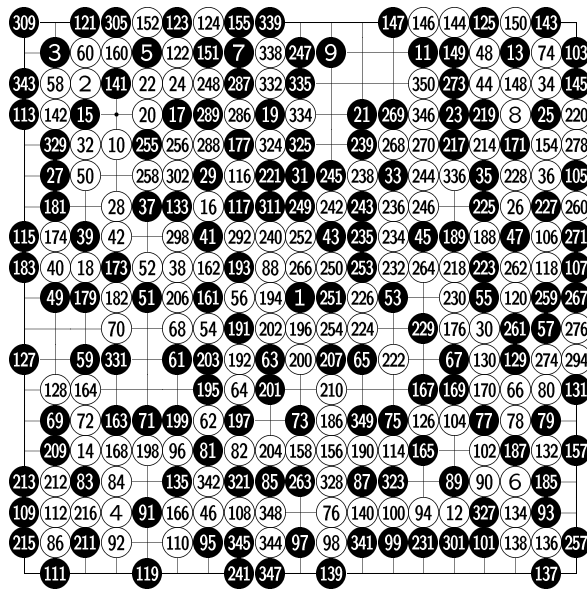
黒：思考錯碁 対 白：彩 (勝ち)



- 166 at 41,
- 181 at 20,
- 190, 195 at 68,
- 191, 226 at 165,
- 192 at 159,
- 193 at 175,
- 206 at 143
- 246: Pass
- 248: Pass
- 250: Pass
- 252: Pass
- 254: Pass
- 256: Pass
- 258: Pass
- 260: Pass
- 262: Pass

264: Pass 266: Pass 270: Pass

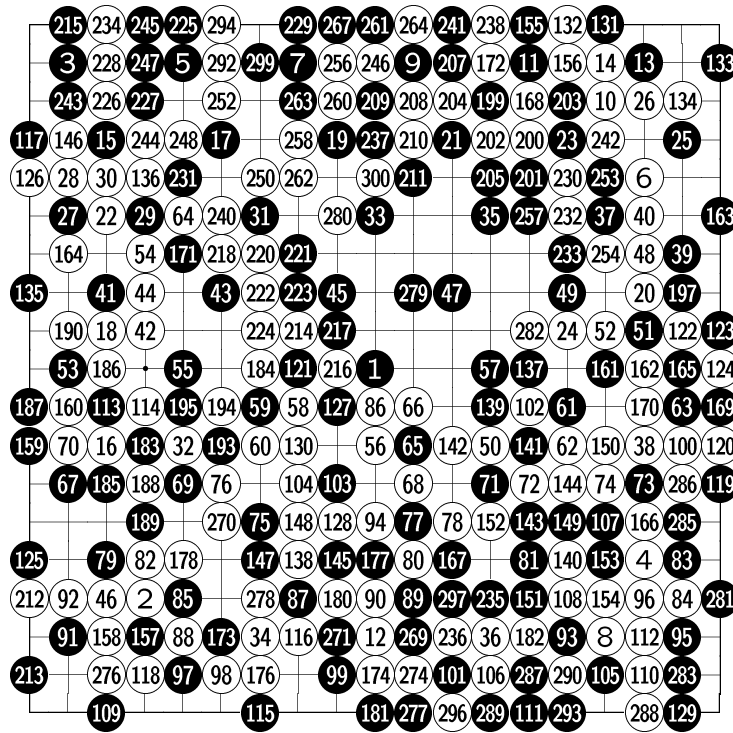
黒：彩 (勝ち) 対 あんどう君囲碁



- 153, 175, 180, 304 at 13,
- 159, 333 at 123,
- 172, 178, 317 at 150,
- 184 at 173,
- 205, 237 at 191,
- 208 at 192,
- 233 at 64,
- 265 at 188,
- 272 at 227,
- 275, 284 at 25,
- 277 at 107,
- 279 at 57,

- 280 at 34,
- 281, 319 at 148,
- 282 at 8,
- 283 at 74,
- 285 at 1,
- 290, 318 at 286,
- 291, 320 at 289,
- 293 at 267,
- 295 at 129,
- 296 at 238,
- 297 at 242,
- 299 at 33,
- 300, 308 at 16,
- 303, 314 at 41,
- 306 at 5,
- 307 at 17,
- 310, 322 at 116,
- 312 at 105,
- 313 at 29,
- 315 at 48,
- 316 at 44,
- 326 at 177,
- 330 at 124,
- 337 at 214,
- 340 at 19

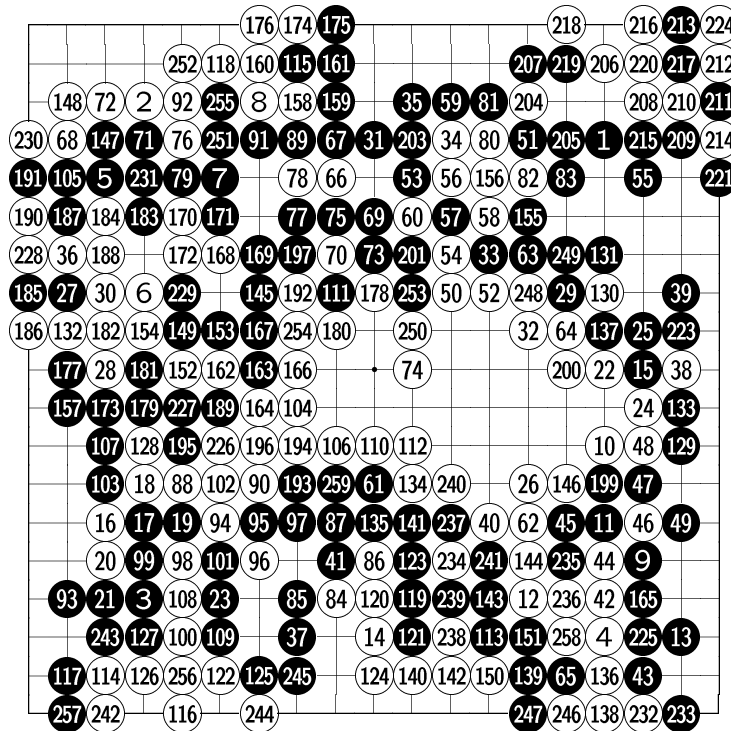
黒：Martha 対 白：彩 (勝ち)
(棋譜は 350 手まで)



- 175 at 157,
- 179, 275 at 77,
- 191 at 183,
- 192 at 113,
- 196 at 193,
- 198 at 51,
- 206 at 199,
- 219 at 121,
- 239 at 11,
- 249 at 15,
- 251 at 23,
- 255 at 253,

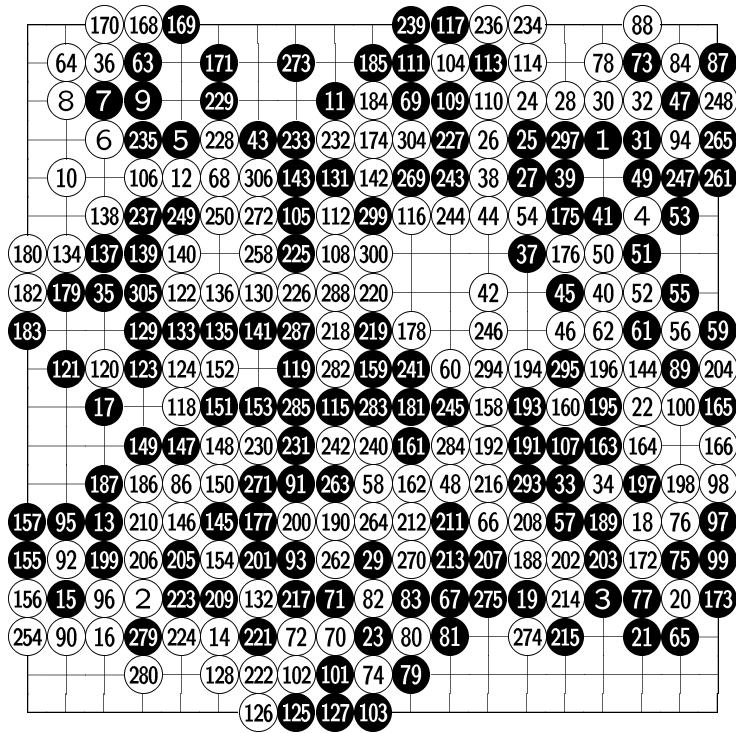
- 259 at 37,
- 265, 268 at 9,
- 266 at 207,
- 272 at 80,
- 273 at 177,
- 284 at 230,
- 291 at 232,
- 295 at 93,
- 298 at 101

黒 : Martha 対 白 : Gnugo(勝ち)



- 198 at 111,
- 202 at 57,
- 222 at 211

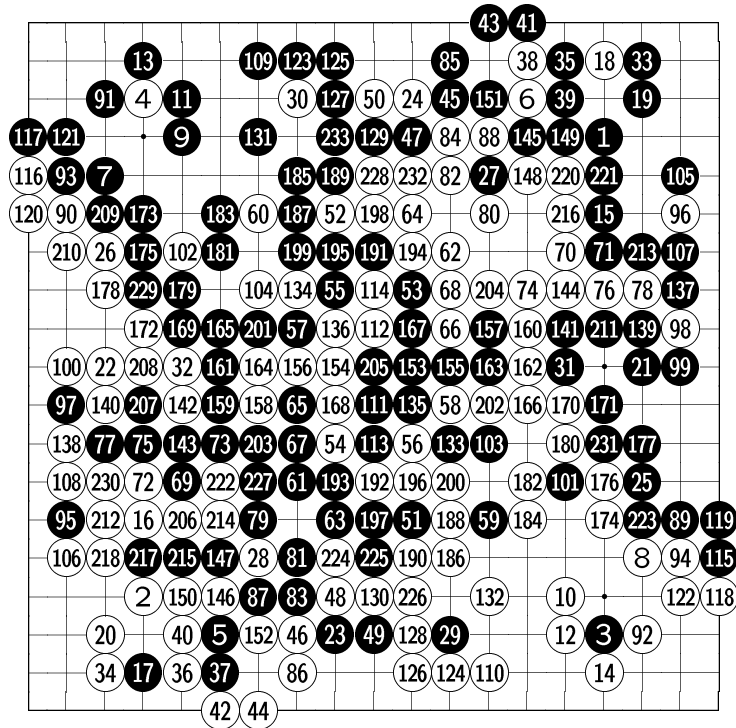
黒 : GnuGo(勝ち) 対 白 : カレンのささやき



- 85 at 23,
- 167 at 56,
- 238 at 104,
- 251, 259, 276 at 165,
- 252, 260, 278, 286, 292 at 34,
- 253 at 15,
- 255, 267, 281, 289, 296 at 197,
- 256, 268 at 204,
- 257 at 132,
- 266 at 47,
- 277 at 82,
- 290 at 113,

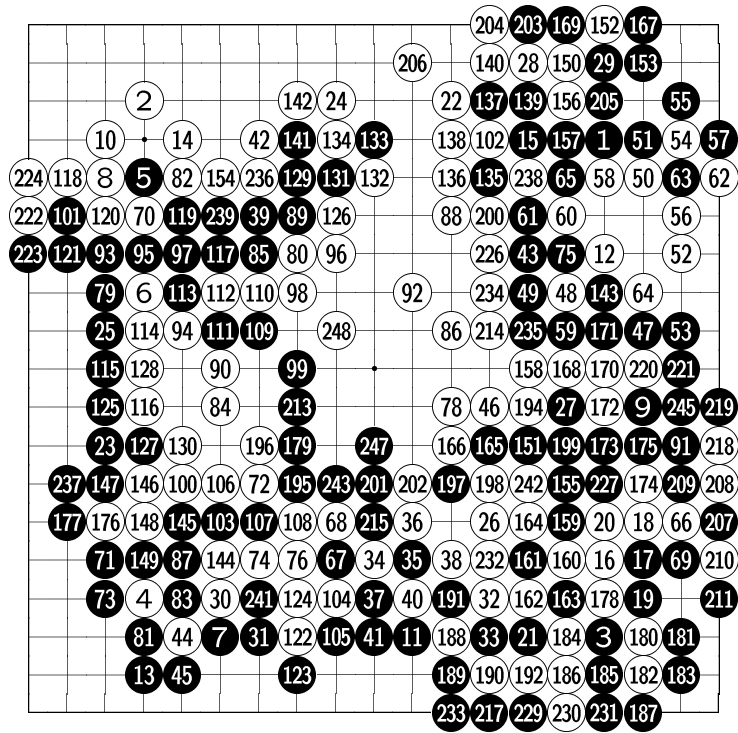
291 at 92, 298, 303 at 160, 301 at 295, 302 at 299

黒：GnuGo(勝ち) 対 白：イメージ



219 at 28

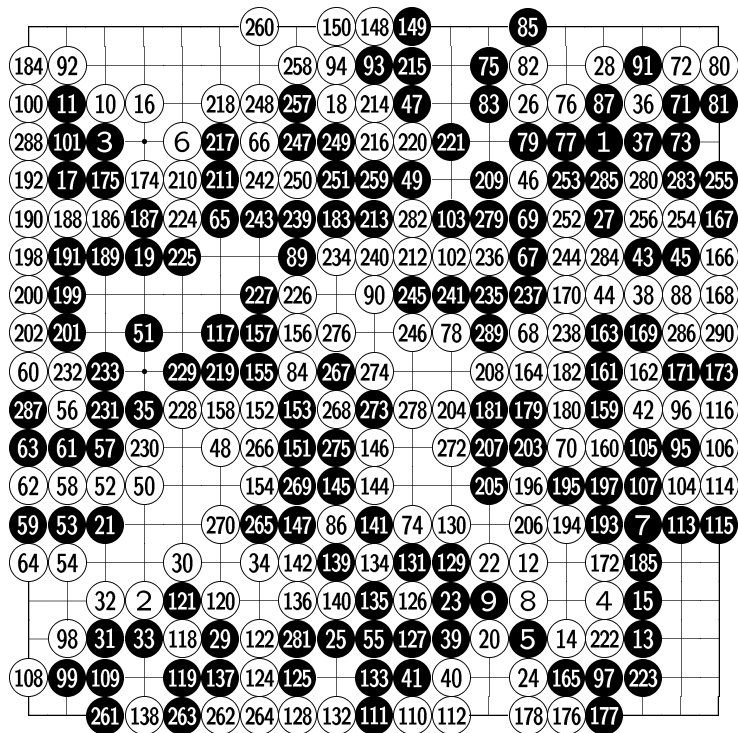
黒：GnuGo(勝ち) 対 白：あんどう君囲碁



- 77 at 54,
- 193 at 188,
- 212 at 207,
- 216 at 35,
- 225 at 152,
- 228 at 163,
- 240 at 135,
- 244 at 67

246: Pass

黒：勝也 对白：GnuGo(勝ち)



- 123 at 118,
- 143 at 134,
- 271 at 86,
- 277 at 268

黒：思考錯碁 对白：GnuGo(勝ち)